

AM.5.VM... / AM.5.VI... MODULAR MAX. PRESSURE VALVES CETOP 5



AM.5.VM... / AM.5.VI...

| | |
|------------------|----------------|
| CMP.20... | Ch. V PAGE 20 |
| CMP.30... | Ch. V PAGE 21 |
| SCREWS AND STUDS | Ch. IV PAGE 35 |

AM.5.VM type pressure regulating valves are available within operating range 7 ÷ 350 bar. Adjustment is by means of a grub screw or a plastic knob. They are three basic versions: **AM.5.VM**, on single A or B lines, and on double A and B lines, with drainage on T; **AM.5.VM.P**, on single P line, with drainage on T; **AM.5.VI**, on single A or B lines, and on double A and B lines, with crossed drainage on either A or B (see hydraulic symbols). Three spring types can be fitted on all versions, with calibrated ranges as shown in the unit specifications. Piloted operation cartridge type CMP.30 is used on versions AM.5.VM and AM.5.VM.P (see ordering code), while on version AM.5.VI direct acting cartridge type CMP.20 is used instead.

For the minimum permissible setting pressure depending on the spring, see the minimum pressure setting curve.

| | |
|--------------------------|---|
| Max. operating pressure | 350 bar |
| Setting ranges: | spring 1 50 bar |
| | spring 2 140 bar |
| | spring 3 350 bar |
| Max. flow | 80 l/min |
| Hydraulic fluids | Mineral oils DIN 51524 |
| Fluid viscosity | 10 ÷ 500 mm ² /s |
| Fluid temperature | -25°C ÷ 75°C |
| Ambient temperature | -25°C ÷ 60°C |
| Max. contamination level | class 10 in accordance with NAS 1638 with filter β ₂₅ ≥ 75 |
| Weight AM.5.VM.A/B/P... | 2,5 Kg |
| Weight AM.5.VM.AB... | 2,7 Kg |
| Weight AM.5.VI.A/B... | 5,7 Kg |
| Weight AM.5.VI.AB... | 5,9 Kg |

4

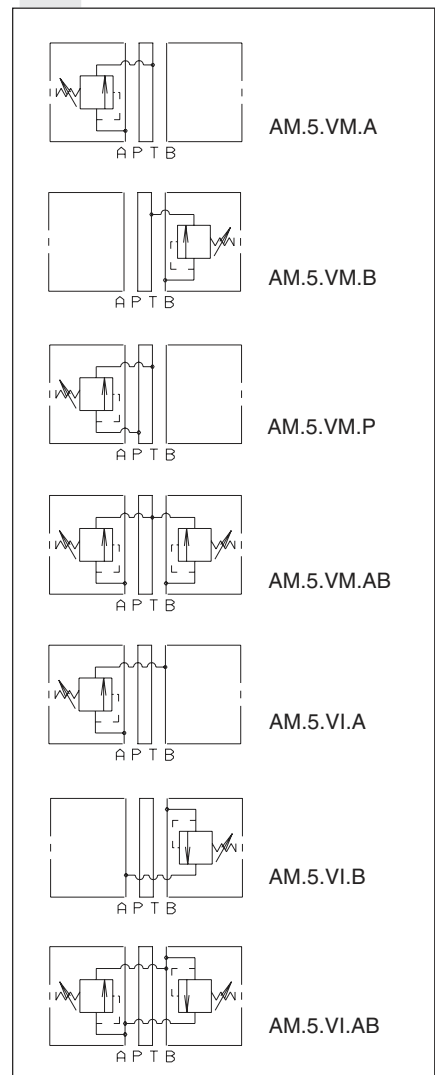
ORDERING CODE

| | |
|-----------|---|
| AM | Modular valve |
| 5 | CETOP 5/NG10 |
| ** | VM = Maximum pressure VI = Maximum crossline relief |
| ** | Adjustment on the lines AM.5.VM Version = A / B / P / AB AM.5.VI Version = A / B / AB |
| * | Type of adjustment M = Plastic knob C = Grub screw |
| * | Setting ranges at port A/B/P CMP 30 (AM.5.VM only) 1 = max. 50 bar 2 = max. 140 bar 3 = max. 350 bar CMP 20 (AM.5.VI only) 1 = max. 50 bar 2 = max. 140 bar 3 = max. 250 bar |
| * | Setting ranges at port B Omit if the setting is same as that at port A CMP 30 (AM.5.VM only) 1 = max. 50 bar 2 = max. 140 bar 3 = max. 350 bar CMP 20 (AM.5.VI only) 1 = max. 50 bar 2 = max. 140 bar 3 = max. 250 bar |
| ** | 00 = No variant V1 = Viton |
| 3 | Serial No. |

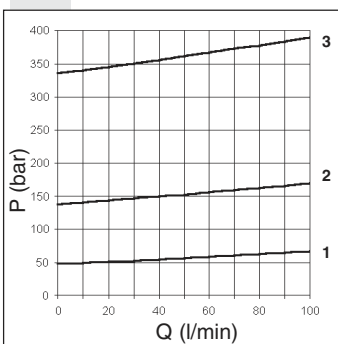
(white spring)
(yellow spring)
(green spring)

(white spring)
(yellow spring)
(green spring)

HYDRAULIC SYMBOLS



PRESSURE - FLOW RATE FOR CMP.30



MINIMUM SETTING PRESSURE FOR CMP.30

