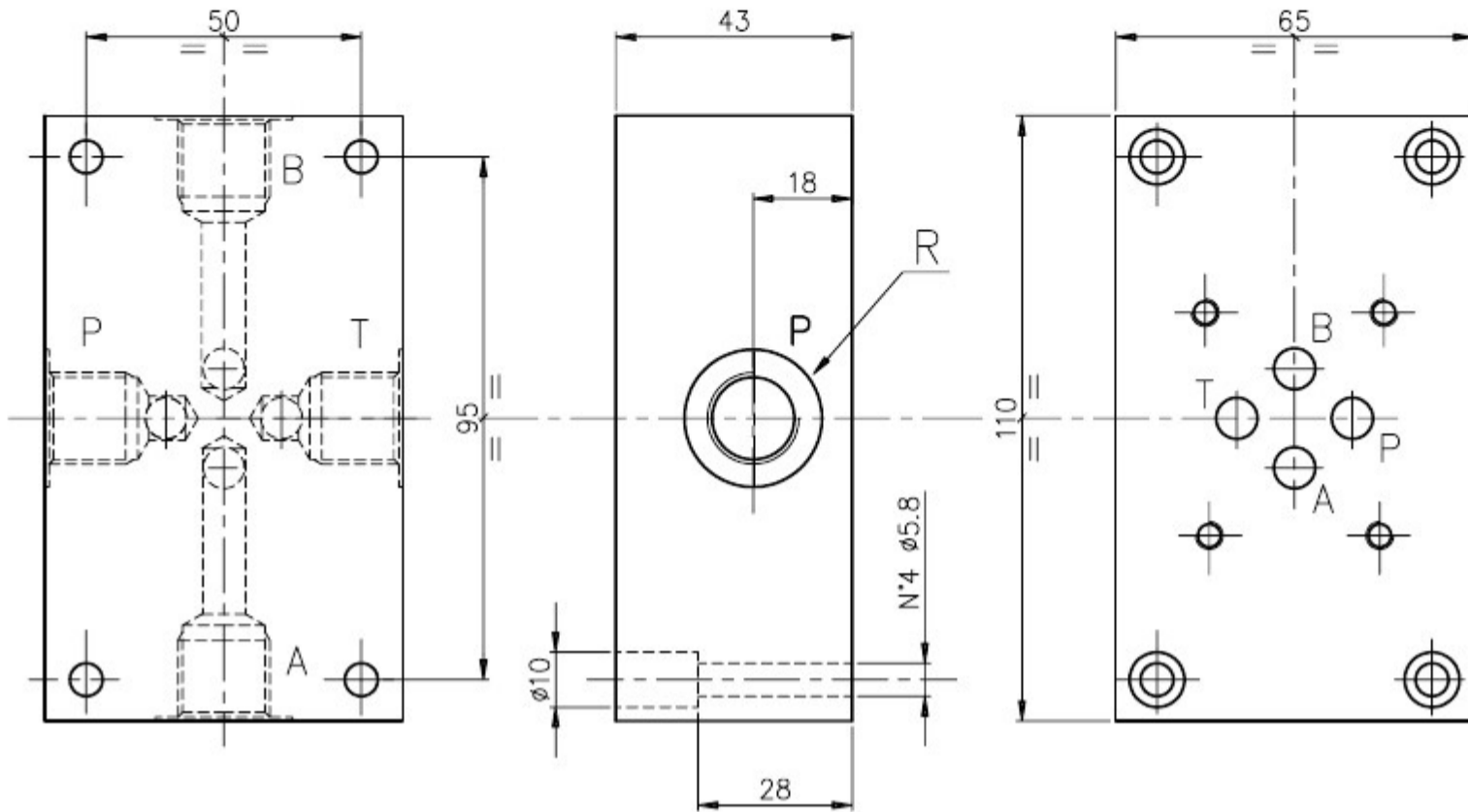


**SUBPLATE TYPE ES3D..L AND TYPE ES3D..LL**  
**GRUNDPLATTE TYP ES3D..L UND TYP ES3D..LL**

Subplate with A-B-P-T on side. Weight 1.8 kg  
 Grundplatte mit A-B-P-T seitlich. Gewicht 1.8 Kg



Ordering code:  
 Bestell-Code:

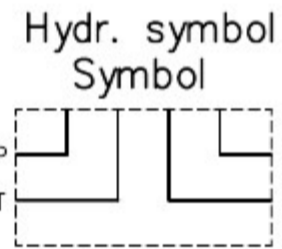
Subplate = S  
 Grundplatte = S

ES 3 D \* L — L = side ports  
 seitl. Anschlüssen

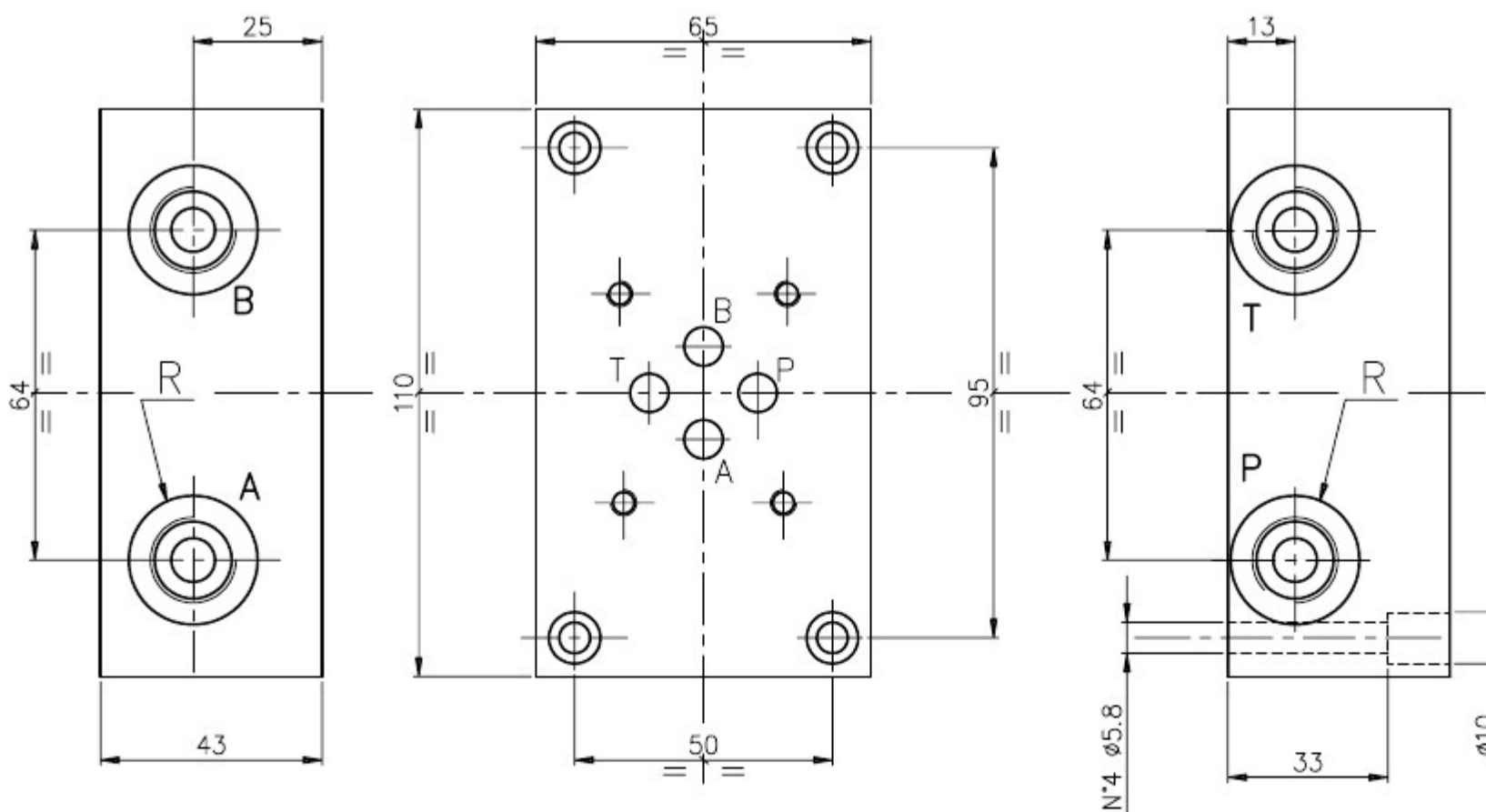
CETOP 3 —

38 = R 3/8" G  
 12 = R 1/2" G

D = Model / Modell



Subplate with A-B-P-T on side. Weight 1.8 kg  
 Grundplatte mit A-B-P-T seitlich. Gewicht 1.8 Kg



Ordering code:  
 Bestell-Code:

Subplate = S  
 Grundplatte = S

ES 3 D \* LL — LL = side ports  
 seitl. Anschlüssen

CETOP 3 —

38 = R 3/8" G  
 14 = R 1/4" G

D = Model / Modell

