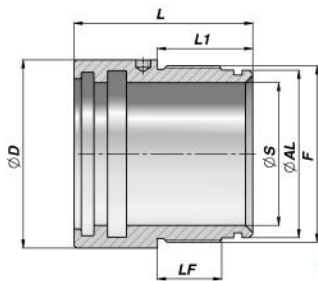
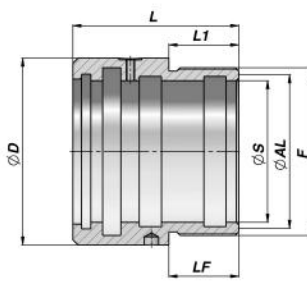


M250



TYPE 1



TYPE 2

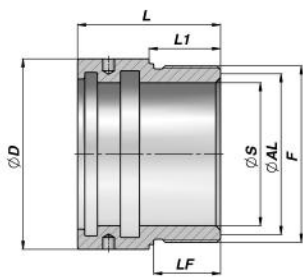


Codice Code Bestell-Nr.	Type	ØS	ØAL	ØD	F	LF	L	L1	kg	Confezione Box Verpackung	Pz Pcs Stk	Set guarnizioni Seal kits Dichtsätze
CGT0200300	1	20	30	39	M34x1,5	15	57	27	0,29	Z25CGT0200300	25	GKGT020030
CGT0250350	1	25	35	44	M39x1,5	19	65	32	0,33	Z25CGT0250350	25	GKGT025035
CGT0300400	1	30	40	49	M44x1,5	19	65	32	0,38	Z25CGT0300400	25	GKGT030040
CGT0350450	1	35	45	54	M49x1,5	19	65	32	0,44	Z12CGT0350450	12	GKGT035045
CGT0400500	1	40	50	59	M54x1,5	22	70	35	0,51	Z12CGT0400500	12	GKGT040050
CGT0450550	1	45	55	64	M60x1,5	22	70	35	0,59	Z12CGT0450550	12	GKGT045055
CGT0500600	1	50	60	69	M64x1,5	22	75	40	0,64	Z12CGT0500600	12	GKGT050060
CGT0600700	1	60	70	79	M74x1,5	27	75	40	0,75	Z10CGT0600700	10	GKGT060070
CGT0700900	2	70	85	100	M90x2	30	90	30	1,92	Z05CGT0700900	5	GKGT070000
CGT0800960	2	80	90	107	M96x2	40	95	40	1,98	Z05CGT0800960	5	GKGT080000
CGT1001240	2	100	120	138,5	M124x2	42	157	42	7,10	Z03CGT1001240	3	GKGT100000

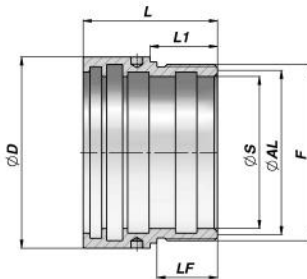
MATERIALE - MATERIAL:
TYPE 1: GHISA OLEODINAMICA - HYDRAULIC CAST IRON - HYDRAULIKGUSS UNI 5007-G25
TYPE 2: ACCIAIO - STEEL - STAHL S1 52.3 / UNI C40

GUARNIZIONI: VEDI PAGINA 93
SEALS: SEE PAGE 93
DICHTUNGEN: SIEHE SEITE 93

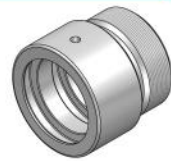
M250



TYPE 1



TYPE 2



Codice Code Bestell-Nr.	Type	ØS	ØAL	ØD	F	LF	L	L1	kg	Confezione Box Verpackung	Pz Pcs Stk	Set guarnizioni Seal kits Dichtsätze
CGHFRT0020	1	20	30	40	M34x1,5	18	42	20	0,21	Z50CGHFRT0020	50	GKGFRT020
CGHFRT0025	1	25	30	40	M34x1,5	18	42	20	0,15	Z50CGHFRT0025	50	GKGFRT025
CGHFRT0030	1	30	40	50	M44x1,5	19	46	21	0,33	Z50CGHFRT0030	50	GKGFRT030
CGHFRT0035	1	35	40	50	M44x1,5	19	46	21	0,22	Z50CGHFRT0035	50	GKGFRT035
CGHFRT0040	1	40	50	60	M54x1,5	28	59	30	0,52	Z25CGHFRT0040	25	GKGFRT040
CGHFRT0045	1	45	50	60	M54x1,5	28	59	30	0,37	Z25CGHFRT0045	25	GKGFRT045
CGHFRT0050	1	50	60	70	M64x1,5	28	60	30	0,62	Z25CGHFRT0050	25	GKGFRT050
CGHFRT0060	1	60	70	80	M74x1,5	28	60	30	0,73	Z20CGHFRT0060	20	GKGFRT060
CGHFRT0070	2	70	80	95	M85x2	32	70	35	1,00	Z05CGHFRT0070	5	GKGFRT070
CGHFRT0080	2	80	90	105	M95x2	36	80	40	1,41	Z05CGHFRT0080	5	GKGFRT080
CGHFRT0090	2	90	100	115	M105x2	36	80	40	1,49	Z05CGHFRT0090	5	GKGFRT090
CGHFRT0100	2	100	110	125	M115x2	45	100	50	2,10	Z03CGHFRT0100	3	GKGFRT100

MATERIALE - MATERIAL:
TYPE 1: ACCIAIO 9SMn28 CON TRATTAMENTO "NI-TEMPER"
STEEL 9SMn28 WITH "NI-TEMPER" TREATMENT
STAHL 9SMn28 MIT "NI-TEMPER-BEHANDLUNG"
TYPE 2: ACCIAIO - STEEL - STAHL S1 52.3 / UNI C40

GUARNIZIONI: VEDI PAGINA 93
SEALS: SEE PAGE 93
DICHTUNGEN: SIEHE SEITE 93