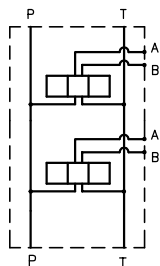
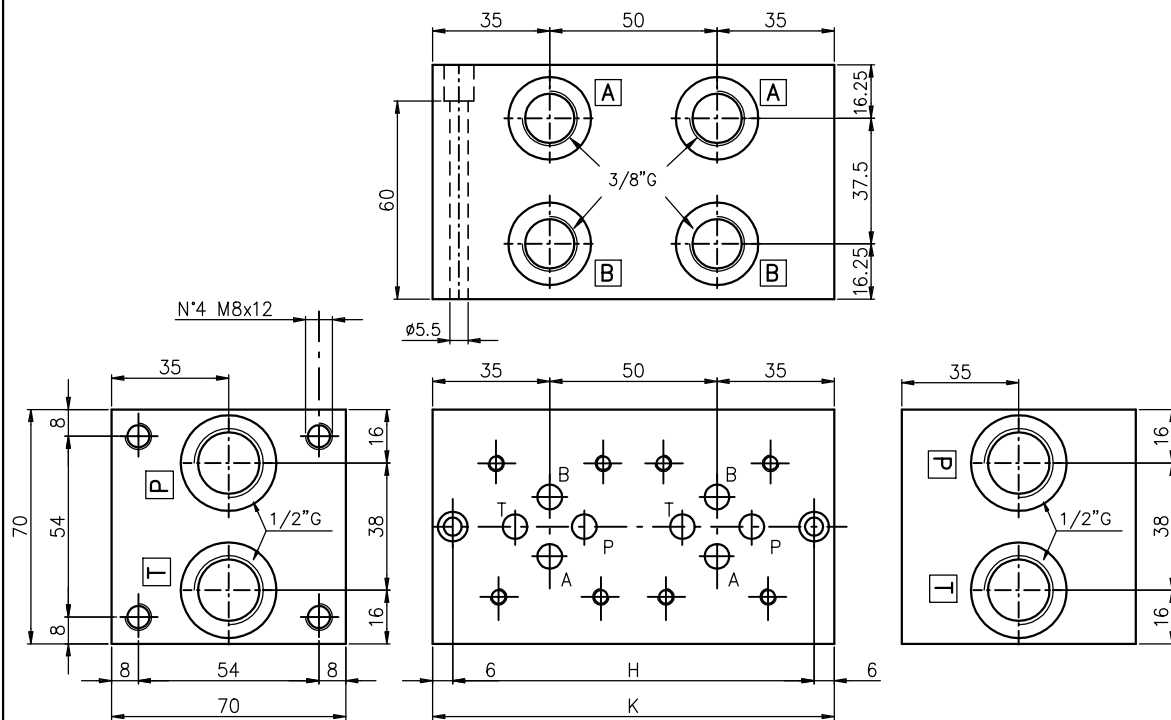


Monoblock with ports on the side, P-T = 1/2", and A-B = 3/8"G  
 Material: aluminium 2011 (FC1). Max operating pressure: 210 bar

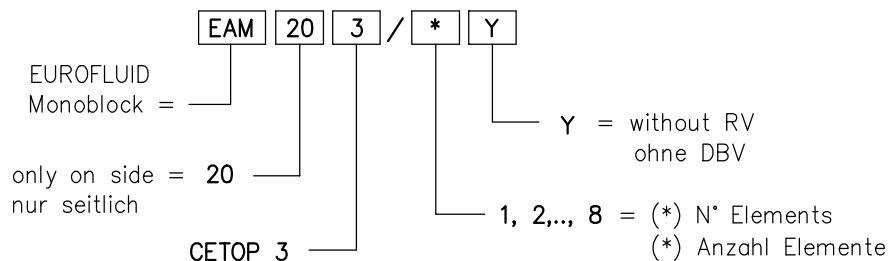
Monoblock mit seitlichen Anschlüssen, P-T = 1/2", und A-B = 3/8"G  
 Werkstoff: aluminium 2011 (AlCuBiPb). Max Betriebsdruck: 210 bar



symbol  
 parallel connection  
 parallel schaltung

N° Elem.	H	K	(Kg)	Price
1	58	70	0.9	€ 38,48
2	108	120	1.5	€ 53,28
3	158	170	2.2	€ 69,03
4	208	220	2.8	€ 84,83
5	258	270	3.5	€ 101,12
6	308	320	4.2	€ 117,39
7	358	370	4.8	€ 135,87
8	408	420	5.5	€ 153,39

Ordering code:  
 Bestell-code:



Note: on request anodization treatment / Auf Wunsch Oberfläche-Behandlung: Eloxierung