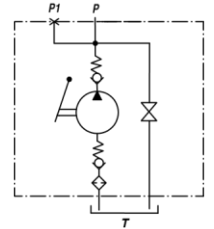
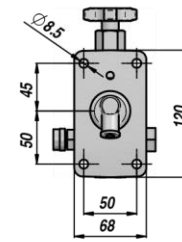
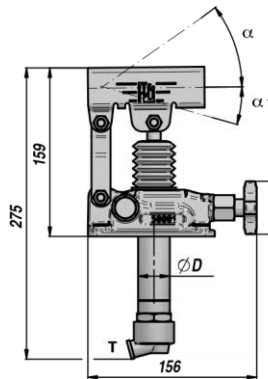
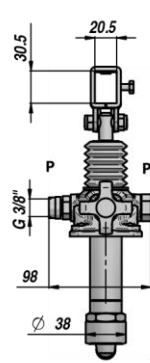
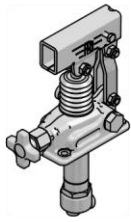


HAND PUMPS AND TANKS

PAM-TS **NEW!**

POMPA A MANO CON RUBINETTO DI SCARICO
HAND PUMP WITH LOWERING VALVE

PREDISPOSTA PER SERBATOIO
SUITABLE FOR OIL TANK



Code	Type	cm ³ /cycle	P MAX bar	ØD	α	α ₁	Working Temperature	kg
PAM0141202	PAM-TS 12	12	380	30	37°	13°		2,89
PAM0142502	PAM-TS 25	25	350	35	57°	15°	-20°C +80°C	2,99
PAM0144502	PAM-TS 45	42	280	40	52°	28°		3,12

Double-stroke for a S.A. cylinder

ON REQUEST:

HAND PUMP WITH ROUND LEVER HOLDER

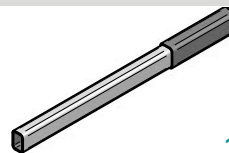
FPM = VITON SEALS

VMQ = FLUORINE-SILICONE SEALS

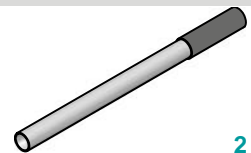
- Hand Pump is supplied with fastening screws and NBR seal.

LEVERS

Code	Sizes	TYPE	kg
* PAM0290000	20 x 30 x 600	1	0,71
PAM0290900	20 x 30 x 900	1	1,41
PAM0291000	20 x 30 x 1000	1	1,55
PM00290100	Ø27 x 600 (PAMX)	2	0,91



1

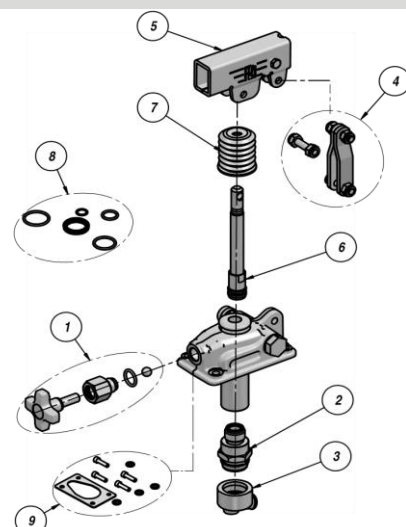


2

* LEVA STANDARD - STANDARD HAND LEVER

SPARE PARTS

Code	Description	For Pump	N°
PAMJVS1245	Lowering valve kit	All type	1
PAMJV01200	Suction valve kit	PAM-TS 12	2
PAMJV02500		PAM-TS 25	
PAMJV04500		PAM-TS 45	
PAMJRA1245	Suction adapter kit with filter	All type	3
PAMJB01245	Conrod kit	All type	4
PAMJ010001	Hand lever holder	All type	5
PAMJPS1200	Rod Piston assembled kit	PAM-TS 12	6
PAMJPS2025		PAM-TS 25	
PAMJPS4045		PAM-TS 45	
PAMJ020015	Bellow	All type	7
PAMGT00012	Standard seal kits	PAM-TS 12	8
PAMGT00025		PAM-TS 25	
PAMGT00045		PAM-TS 45	
PAMJ030017	NBR seal + screws	All type	9



The company reserves the right to modify the product at any time without prior notice.