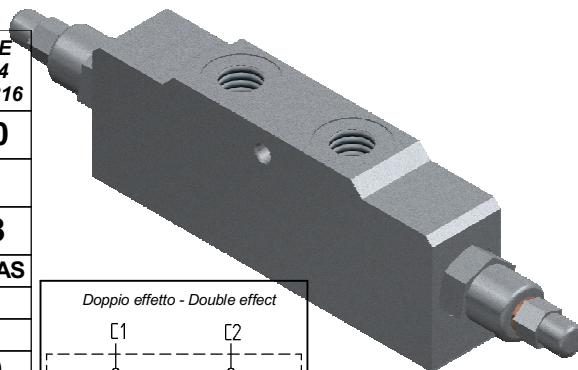
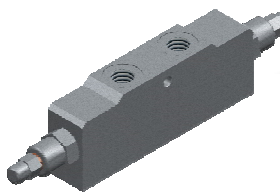


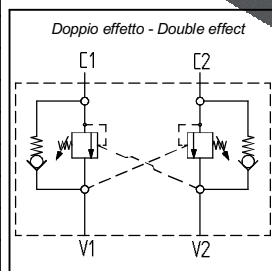
Valvola overcenter doppio effetto
Dual pilot assisted overcenter valve

AISI316

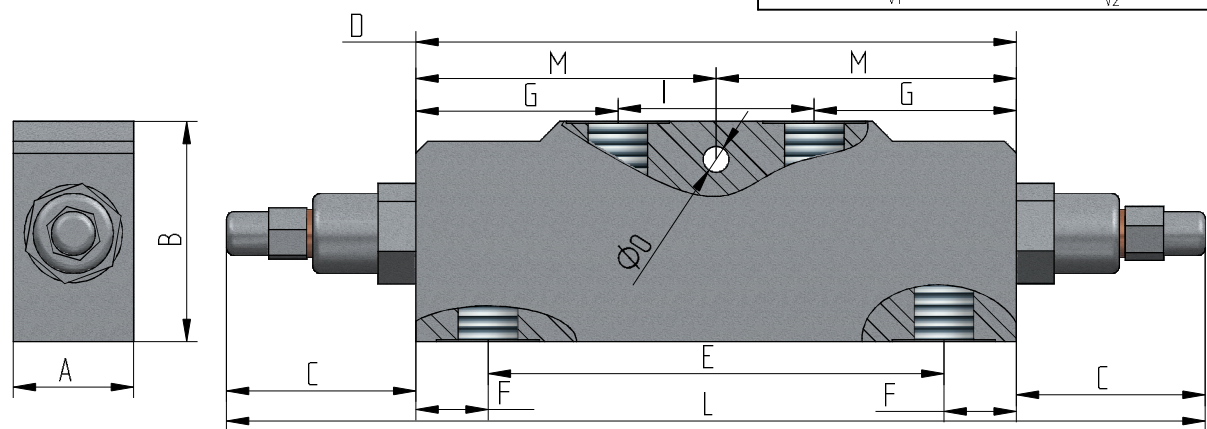
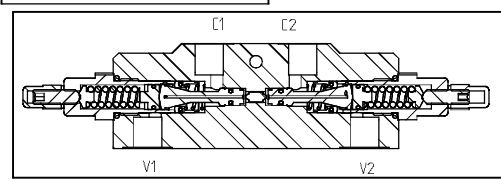
VODE



Descrizione Description	VODE -G1/4 -AISI316	VODE -G3/8 -AISI316	VODE -G1/2 -AISI316	VODE -G3/4 -AISI316
Pressione massima Max pressure	350	350	350	350
Portata - Flow	30	40	60	90
Peso - Weight	2,10	2,06	2,00	3,8
V1 - V2 - C1 - C2	1/4 GAS	3/8 GAS	1/2 GAS	3/4 GAS
A	30	30	30	35
B	60	60	70	80
C	(54)	(54)	(54)	(57)
D	150	150	150	190
E	110	110	110	143
F	20	20	20	23,5
G	45	45	45	55
I	50	50	50	65
O	∅ 8,5	∅ 8,5	∅ 8,5	∅ 8,5
Rapporto pilotaggio - Pilot ratio	1:4,25	1:4,25	1:4,25	1:6,25



Dati tecnici indicativi e non impegnativi.
 L'azienda si riserva di apportare modifiche in qualsiasi momento e senza preavviso.
 Technical data not binding.
 Modifications reserved without prior notice.



Codice di ordinazione
Ordering code

VODE-	Option 1	G1/4	Option 2	X	-AISI316
		G3/8		Y	
		G1/2			
		G3/4			

Nel caso non si indicasse l'Opzione2, sarà fornita in configurazione standard.
 If Option2 is not indicated, standard configuration will be considered.

Option 1	Option 2	Taratura - Range setting
Thread V1 - V2 - C1 - C2		
G1/4 Filetto 1/4 Gas Thread 1/4 Gas	X	30 - 210 Bar
G3/8 Filetto 3/8 Gas Thread 3/8 Gas	Y	60 - 350 Bar
G1/2 Filetto 1/2 Gas Thread 1/2 Gas		
G3/4 Filetto 3/4 Gas Thread 3/4 Gas		

