

ELI3 series how to order / come ordinare

ELI	TYPE	ROTATION	DISPL.	SHAFT	PORTS	SEALS
	3	D - CW	20.4	T0	A	N
	3A	S - CCW	21.6	C0	FA**	V
			26.3	C1		
			33.3	C3		
			39.1	S1		
			43.2	S2		
			52.0			
			60.8			
			64.3			
			70.7			
			78.3			
			87.1			

Pump standard types:		
3	= european flange + shaft T0 + ports A + standard seals	= flangia europea + albero T0 + porte A + guarnizioni standard
3A	= flange A + shaft C1 + ports A + standard seals	= flangia A + albero C1 + porte A + guarnizioni standard
Examples:		
ELI3-D-33.3-T0-A-N	= clockwise rotation, 33.3 cm ³ /rev, european flange, 1:8 tapered shaft, flanged ports A type, standard seals.	= pompa destra, 33.3 cm ³ /giro, flangia europea, albero conico 1:8, porte flangiate tipo A, guarnizioni standard.
ELI3A-D-43.2-S1-A-N	= clockwise rotation, 43.2 cm ³ /rev, SAE flange, splined shaft S1, flanged ports A type, standard seals.	= pompa destra, 43.2 cm ³ /giro, flangia SAE, albero scanalato S1, porte flangiate tipo A, guarnizioni standard.
ELI3A-D-64.3-C1-FA-V	= clockwise rotation, 64.3 cm ³ /rev, SAE flange, cylindrical shaft C1, threaded ports FA**, fluorocarbon seals.	= pompa destra, 64.3 cm ³ /giro, flangia SAE, albero cilindrico C1, porte filettate tipo FA**, guarnizioni in fluorocarbonato.

The product data sheets show our standard model types. The synoptic tables for flanges, shafts and ports show all the possible configurations. For further details about the availability of each configuration please contact our Sales and Technical Dept. * Value based on ISO4412 test procedure ** With thread ports on outlet side, a reduction of body fatigue strength may occur if the pump is working at elevated and intermittent pressures. For further details please contact our Sales and Technical Dept. we suggest to provide application specification through our PID form.

Le tavole di prodotto rappresentano i tipi di pompa standard per Marzocchi Pompe. Le tavole sinottiche di flange, alberi e porte hanno lo scopo di rappresentare tutte le possibili configurazioni di prodotto. Per maggiori dettagli sulle disponibilità e condizioni di fornitura, consigliamo di interpellare il nostro ufficio tecnico – commerciale. * Valore rilevato con procedura ISO 4412. ** Con porte filettate nel lato di mandata, nel caso di funzionamento a pressioni elevate e intermittenti è possibile una riduzione della resistenza a fatica del corpo. Per maggiori dettagli consigliamo di interpellare il nostro Ufficio Tecnico – Commerciale. Consigliamo di comunicare le specifiche dell'applicazione attraverso il nostro modulo PID.



ELI3

Torque wrenches:
Coppie di serraggio:



80 ± 4 Nm

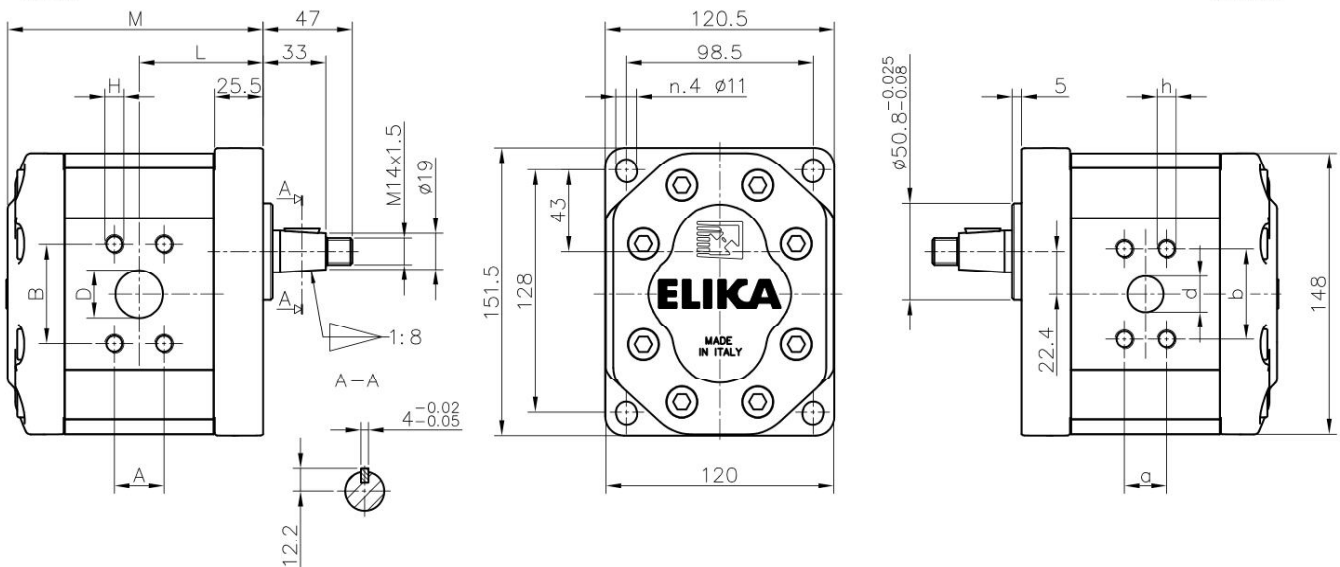
M10 screws 30 Nm
M12 screws 40 Nm
Viti M10 30 Nm
Viti M12 40 Nm

Accessories supplied with the standard pump:
woodruff key (code 522058), M14 x 1.5 hexagonal nut (code 523017), washer (code 523006). Standard ports: M10, M12 threads depth 20 mm.

Parti accessorie a corredo della pompa standard:
linguetta a disco (codice 522058), dado M14x1.5 (codice 523017), rosetta elastica spaccata (codice 523006). Porte standard: filetti M10, M12 profondità utile = 20 mm.

ASPIRAZIONE
INLET

MANDATA
OUTLET



Pump Type <i>Pompa tipo</i>	Displ. <i>Cilindr.</i>	Flow at 1500 rpm <i>Portata a 1500 rpm</i>	Operating pressures <i>Pressioni operative</i>			Rotation speed <i>Velocità di rotazione</i>		Noise at 1500 rpm* <i>Rumorosità a 1500 rpm</i>		Dimensions <i>Dimensioni</i>					
			P1 Max cont.	P2 Max intermitt.	P3 Max peak	Minimum speed	Maximum speed	On recirc.	at P1	L	M	D	A / B	d	a / b
	<i>cm³/rev</i>	<i>l/min</i>	<i>bar</i>	<i>bar</i>	<i>bar</i>	<i>rpm</i>	<i>rpm</i>	<i>dB(A)</i>	<i>dB(A)</i>	<i>mm</i>	<i>mm</i>	<i>mm</i>	<i>mm</i>	<i>mm</i>	<i>mm</i>
ELI3-D-20.4	20.4	30.7	280	295	310	300	3500	49	59	64.3	129.5	25	26.2/52.4	19	22.2/47.6
ELI3-D-21.6	21.6	32.4	280	295	310	300	3500	49	59	64.3	130.5	25	26.2/52.4	19	22.2/47.6
ELI3-D-26.3	26.3	39.4	280	295	310	300	3500	49	59	65.3	134.5	25	26.2/52.4	19	22.2/47.6
ELI3-D-33.3	33.3	50.0	270	285	300	300	3500	50	60	71.3	140.5	31	30.2/58.7	25	26.2/52.4
ELI3-D-39.1	39.1	58.7	260	275	290	300	3500	50	60	72.8	145.5	31	30.2/58.7	25	26.2/52.4
ELI3-D-43.2	43.2	64.8	250	265	280	200	3500	51	61	74.0	149.0	31	30.2/58.7	25	26.2/52.4
ELI3-D-52.0	52.0	78.0	230	245	260	200	3500	51	61	80.8	156.5	34	35.7/69.9	25	26.2/52.4
ELI3-D-60.8	60.8	91.1	210	225	240	200	3300	51	62	84.5	164.0	34	35.7/69.9	25	26.2/52.4
ELI3-D-64.3	64.3	96.4	210	225	240	200	3200	51	62	86.0	167.0	34	35.7/69.9	25	26.2/52.4
ELI3-D-70.7	70.7	106.0	200	215	230	200	2900	52	63	94.8	172.5	38	35.7/69.9	25	26.2/52.4
ELI3-D-78.3	78.3	117.4	180	195	210	200	2600	52	63	99.0	179.0	38	35.7/69.9	25	26.2/52.4
ELI3-D-87.1	87.1	130.6	160	175	190	200	2400	52	63	103.8	186.5	38	35.7/69.9	25	26.2/52.4

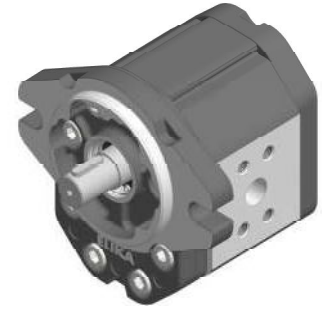
ELI3A

Accessories supplied with the standard pump: wood-ruff key (code 522058). Mounting Flange 101-2 (B) in compliance with SAEJ744c. Standard ports: M10, M12 threads depth 20 mm.

Parti accessorie a corredo della pompa standard: linguetta (codice 522068). Monta flangia 101-2 (B) secondo norma SAEJ744c. Porte standard: filetti M10, M12 profondità utile = 20 mm.

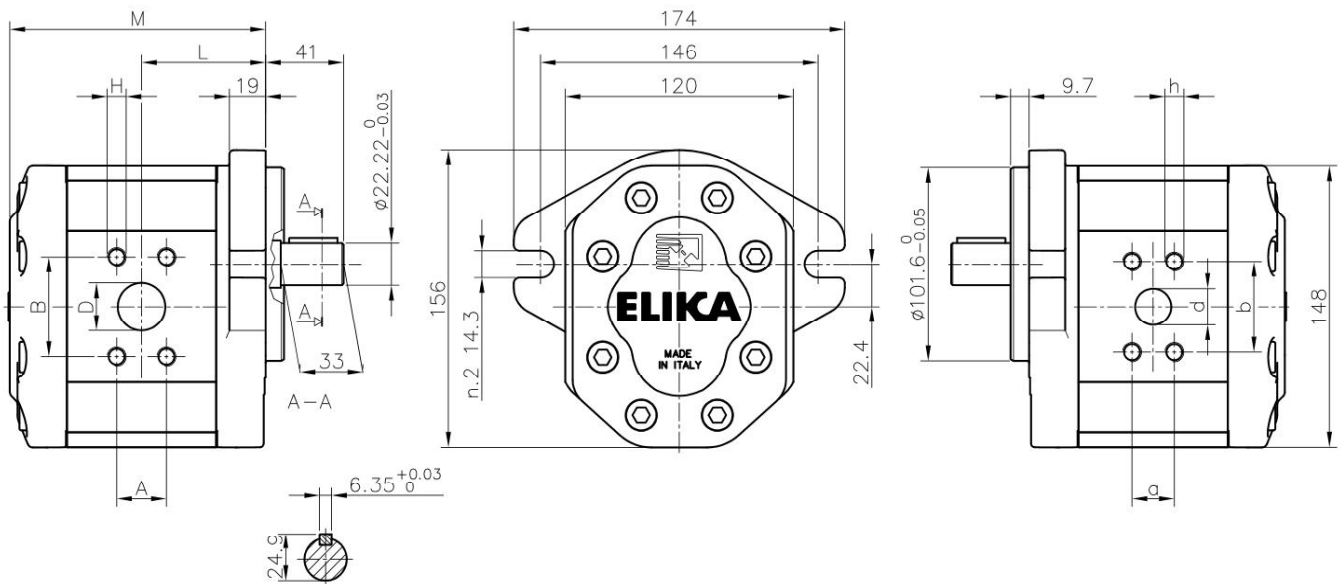
Torque wrenches:
Coppie di serraggio:

M10 screws 30 Nm
M12 screws 40 Nm
Viti M10 30 Nm
Viti M12 40 Nm



ASPIRAZIONE
INLET

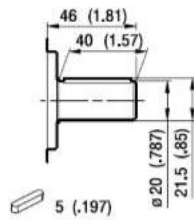
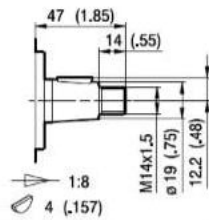
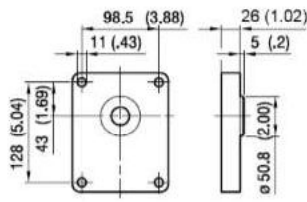
MANDATA
OUTLET



Pump Type <i>Pompa tipo</i>	Displ. <i>Cilindr.</i>	Flow at 1500 rpm <i>Portata a 1500 rpm</i>	Operating pressures <i>Pressioni operative</i>			Rotation speed <i>Velocità di rotazione</i>		Noise at 1500 rpm* <i>Rumorosità a 1500 rpm</i>		Dimensions <i>Dimensioni</i>					
			P1 Max cont.	P2 Max intermitt.	P3 Max peak	Minimum speed	Maximum speed	On recirc.	at P1	L	M	D	A / B	d	a / b
	[cm ³ /rev]	[l/min]	[bar]	[bar]	[bar]	[rpm]	[rpm]	[dBA]	[dBA]	[mm]	[mm]	[mm]	[mm]	[mm]	[mm]
ELI3A-D-20.4	20.4	30.7	280	295	310	300	3500	49	59	64.3	129.5	25	26.2/52.4	19.0	22.2/47.6
ELI3A-D-21.6	21.6	32.4	280	295	310	300	3500	49	59	64.3	130.5	25	26.2/52.4	19.0	22.2/47.6
ELI3A-D-26.3	26.3	39.4	280	295	310	300	3500	49	59	65.3	134.5	25	26.2/52.4	19.0	22.2/47.6
ELI3A-D-33.3	33.3	50.0	270	285	300	300	3500	50	60	71.3	140.5	31	30.2/58.7	25.0	26.2/52.4
ELI3A-D-39.1	39.1	58.7	260	275	290	300	3500	50	60	72.8	145.5	31	30.2/58.7	25.0	26.2/52.4
ELI3A-D-43.2	43.2	64.8	250	265	280	200	3500	51	61	74.0	149.0	31	30.2/58.7	25.0	26.2/52.4
ELI3A-D-52.0	52.0	78.0	230	245	260	200	3500	51	61	80.8	156.5	34	35.7/69.9	25.0	26.2/52.4
ELI3A-D-60.8	60.8	91.1	210	225	240	200	3300	51	62	84.5	164.0	34	35.7/69.9	25.0	26.2/52.4
ELI3A-D-64.3	64.3	96.4	210	225	240	200	3200	51	62	86.0	167.0	34	35.7/69.9	25.0	26.2/52.4
ELI3A-D-70.7	70.7	106.0	200	215	230	200	2900	52	63	94.8	172.5	38	35.7/69.9	25.0	26.2/52.4
ELI3A-D-78.3	78.3	117.4	180	195	210	200	2600	52	63	99.0	179.0	38	35.7/69.9	25.0	26.2/52.4
ELI3A-D-87.1	87.1	130.6	160	175	190	200	2400	52	63	103.8	186.5	38	35.7/69.9	25.0	26.2/52.4

FLANGE / FLANGES

ALBERI / SHAFTS

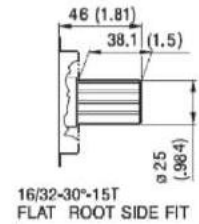
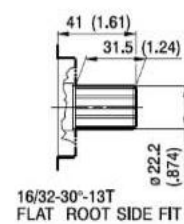
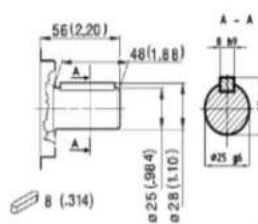
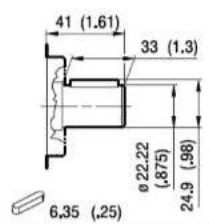
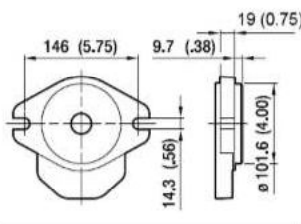


TO

CO

Coppia Max
Max Torque 280 Nm

Coppia Max
Max Torque 265 Nm



C1

C3

S1

S2

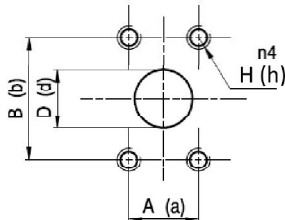
Coppia Max
Max Torque 295 Nm

Coppia Max
Max Torque 380 Nm

Coppia Max
Max Torque 405 Nm

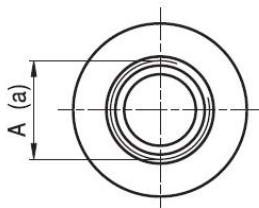
Coppia Max
Max Torque 660 Nm

PORTE / PORTS



A

TYPE	INLET			OUTLET		
	D	A / B	H	d	a / b	h
ELI3..20.4 / 26.3	25.0	26.2 / 52.4	M10	19.0	22.2 / 47.6	M10
ELI3..33.3 / 43.2	31.0	30.2 / 58.7	M10	25.0	26.2 / 52.4	M10
ELI3..52.0 / 64.3	34.0	35.7 / 69.9	M12	25.0	26.2 / 52.4	M10
ELI3..70.7 / 87.1	38.0	35.7 / 69.9	M12	25.0	26.2 / 52.4	M10



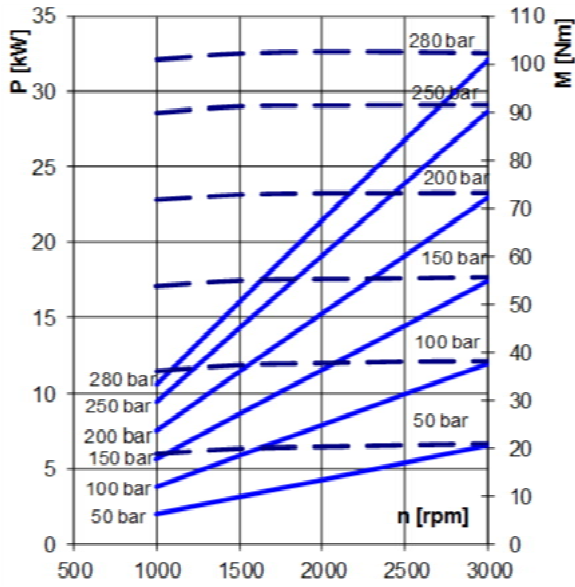
*

TYPE	INLET A	OUTLET* a
ELI3..20.4 / 26.3	1 5/16 - 12 UN - 2B	1 1/16 - UN - 2B
ELI3..33.3 / 43.2	1 5/8 - 12 UN - 2B	1 1/16 - UN - 2B
ELI3..52.0 / 87.1	1 7/8 - 12 UN - 2B	1 5/16 - UN - 2B

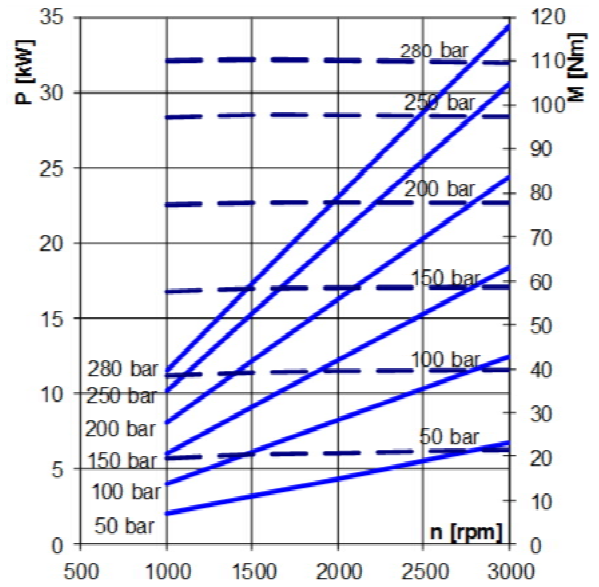
FA

* With thread ports a reduction of body fatigue strength may occur if the pump is working at elevated and intermittent pressures. *Con porte filettate, nel caso di funzionamento a pressioni elevate e intermittenti è possibile una riduzione della resistenza a fatica del corpo.*

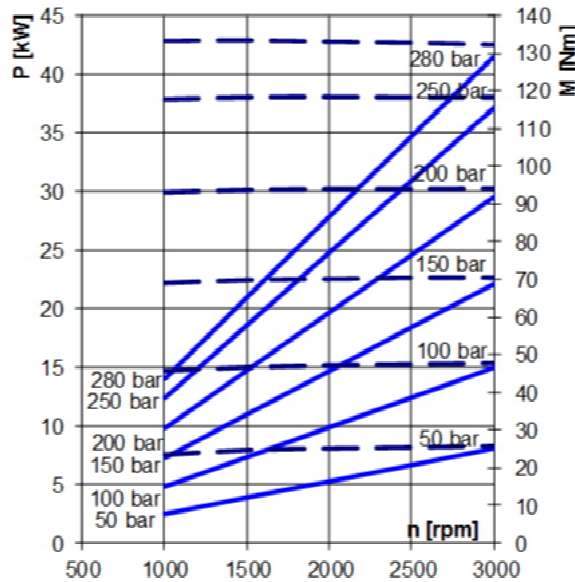
ELI3-20.4



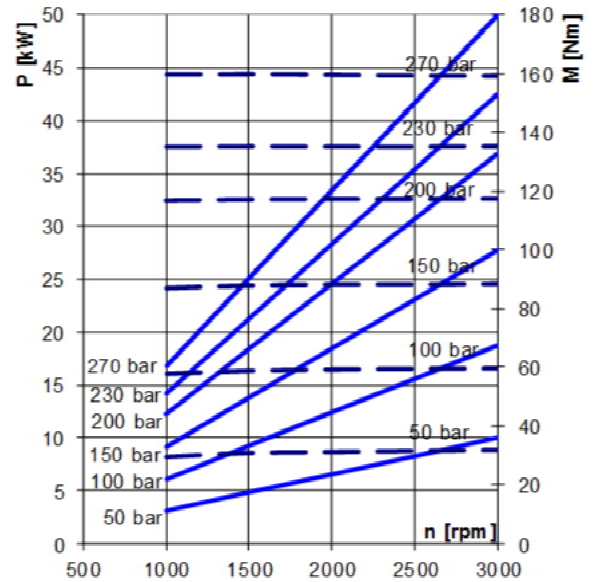
ELI3-21.6



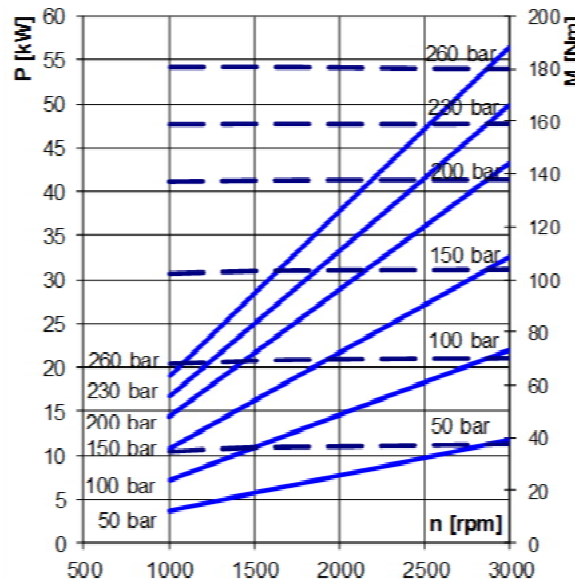
ELI3-26.3



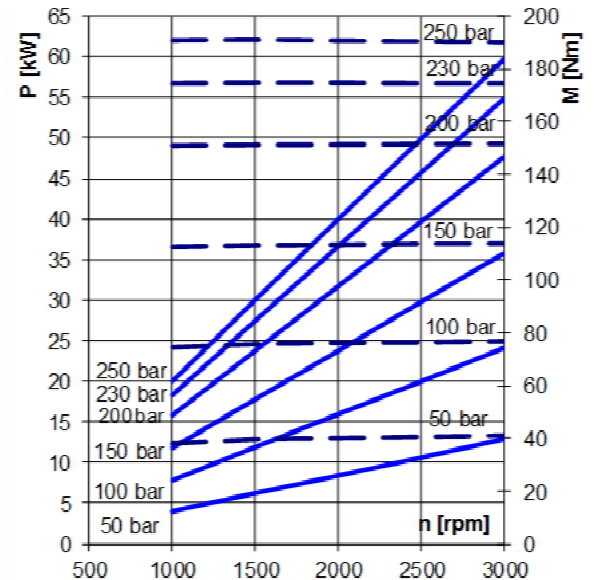
ELI3-33.3



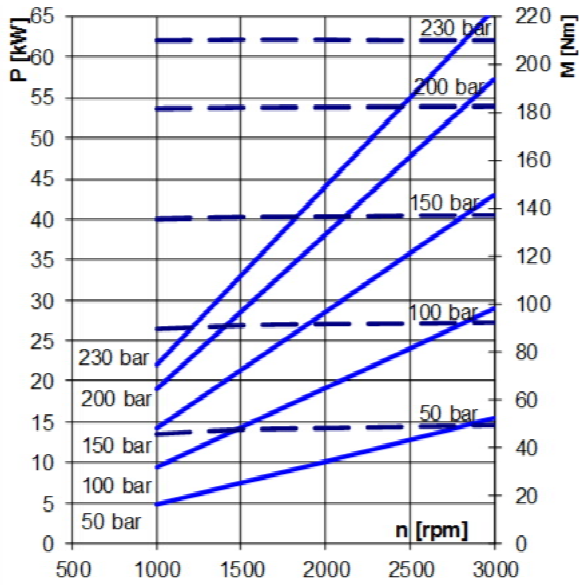
ELI3-39.1



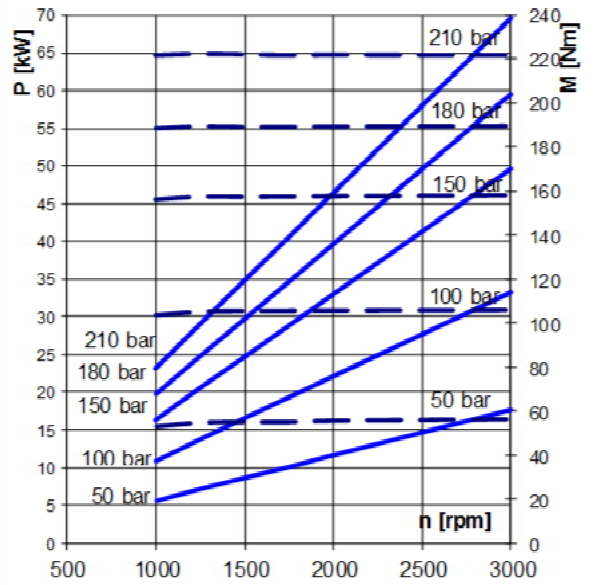
ELI3-43.2



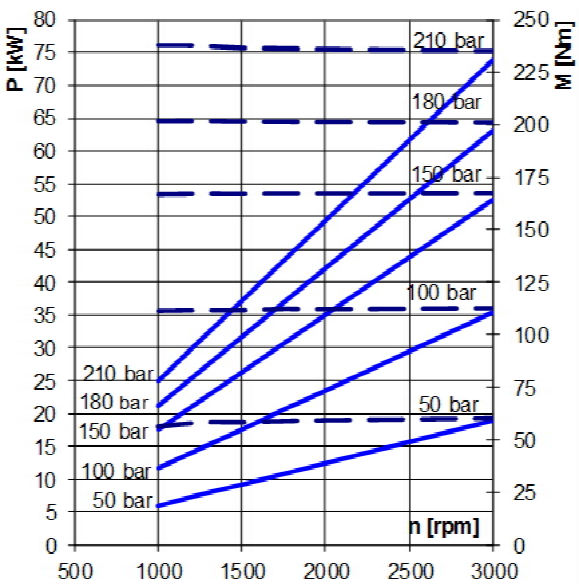
ELI3-52.0



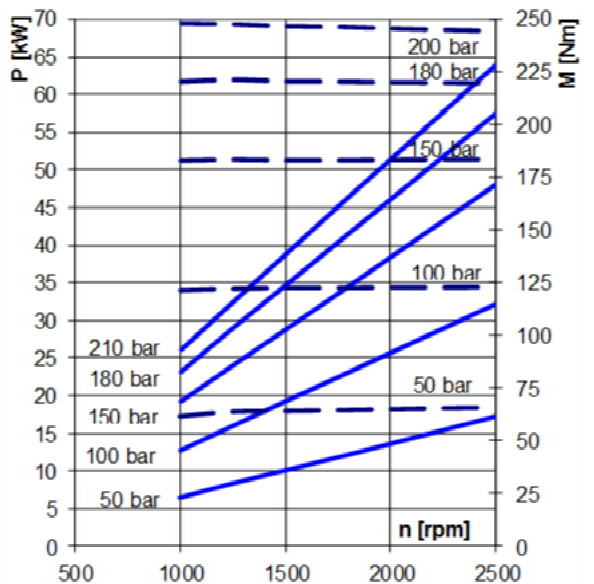
ELI3-60.8



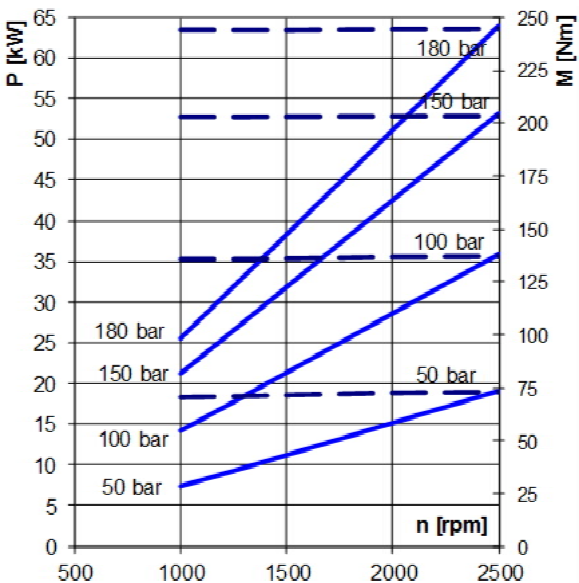
ELI3-64.3



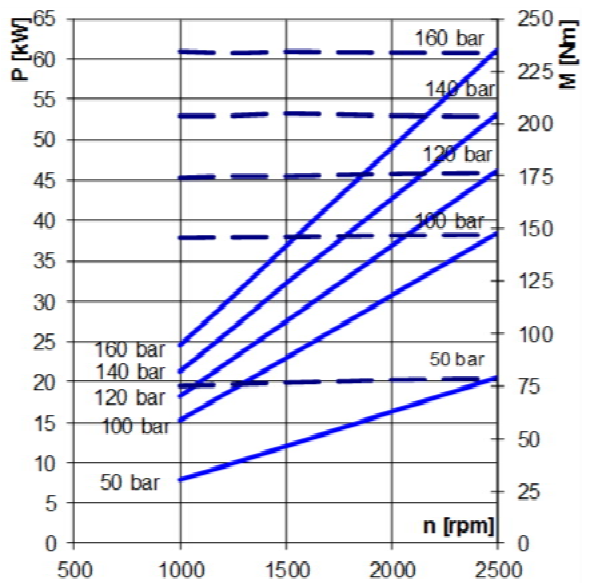
ELI3-70.7



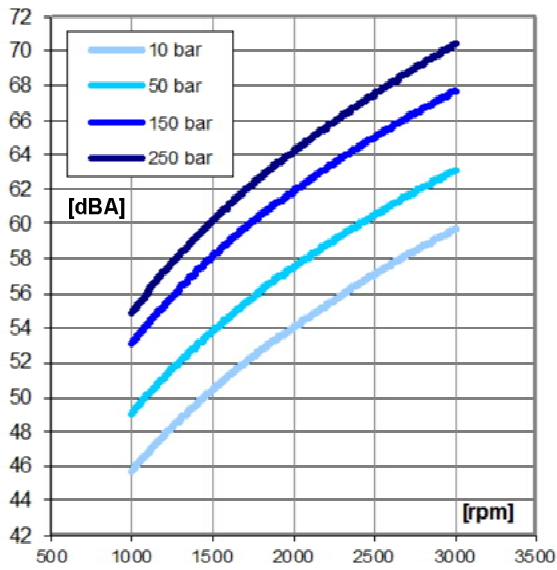
ELI3-78.3



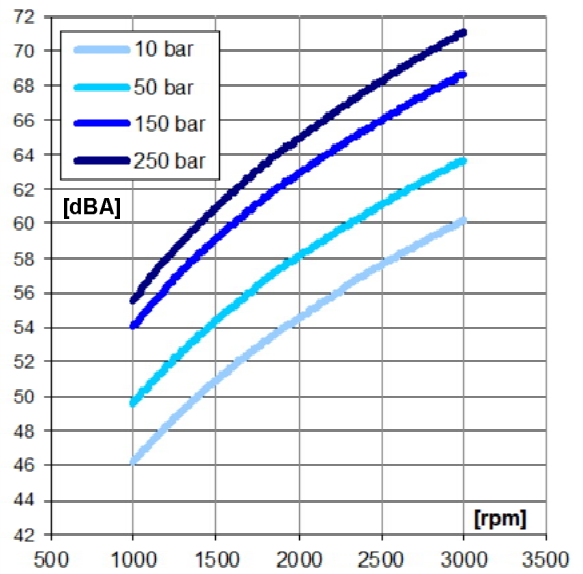
ELI3-87.1



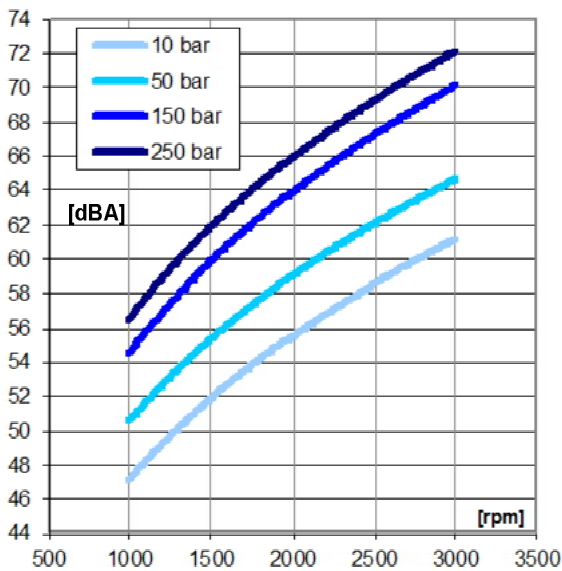
ELI3-20.4 / ELI3-21.6



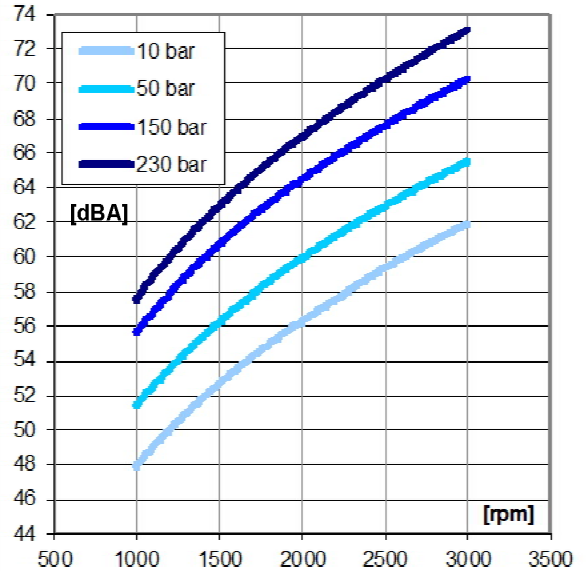
ELI3-26.3 / ELI3-33.3



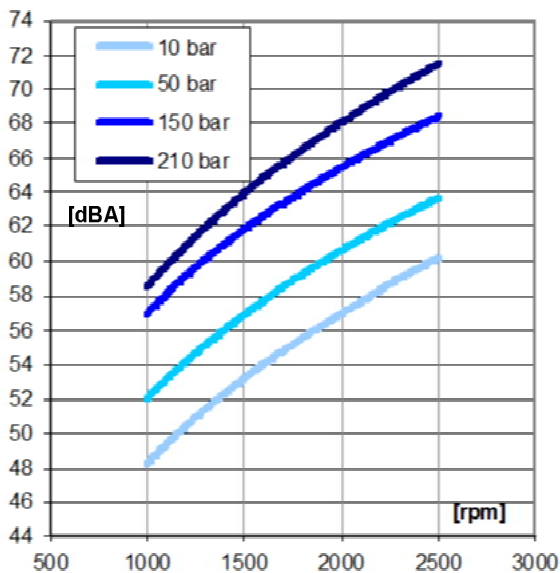
ELI3-39.1 / ELI3-43.2



ELI3-52.0 / ELI3-60.8



ELI3-64.3 / ELI3-70.7



ELI3-78.3 / ELI3-87.1

